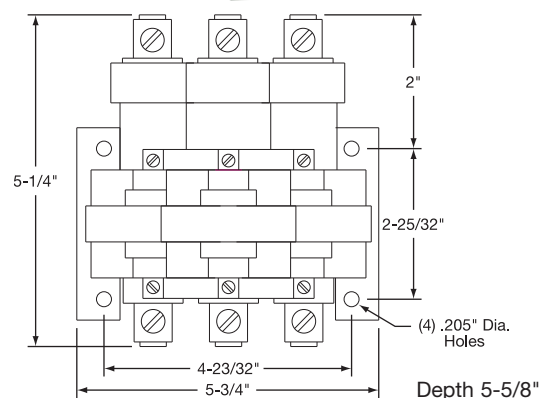
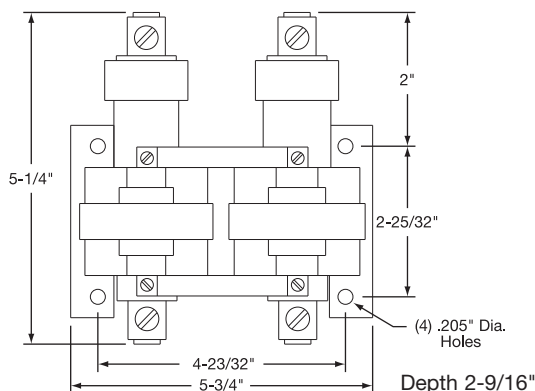
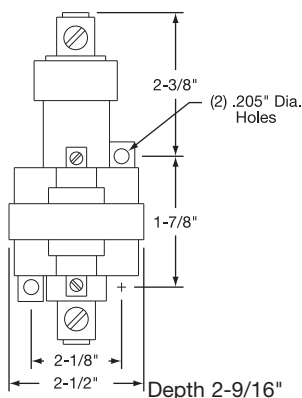
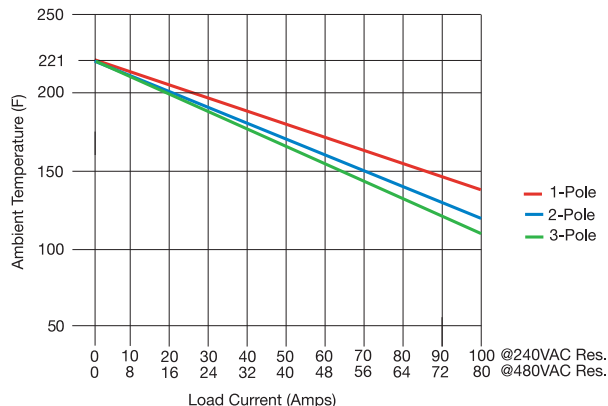


Mercury Displacement Relays — 100 Amp Resistive Loads

DE-RATING CURVES:
100 AMP Normally Open



Specifications

- Operate Time:** 50 mSec
- Release Time:** 80 mSec
- Contact Rating:** 240 VAC – 100 Amp
480 VAC – 80 Amp
- Contact Resistance:** .001Ω
- Temperature Range:** -31 to 185°F
(-35 to 85°C)
- Dielectric Strength:** 2500 VAC RMS
- Agency Approvals:** UL, CSA

Standard (Non-Stock) and Stock Mercury Displacement Relay Specifications

Stock Items Are Shown In RED

Type	Coil Volts	100 AMP RELAYS		Coil Resistance (ohms)	TEMPCO Part Number
		Coil Current	Cross Reference MDI		
1 Pole Normally Open	24 VDC	369 mA	100NO-24D	65	RLY90030
	24 VAC	646 mA	100NO-24A	16	RLY90031
	120 VAC	137 mA	100NO-120A	380	RLY90032
	220 VAC	73 mA	100NO-220A	1400	RLY90033
	277 VAC	55 mA	100NO-277A	2400	RLY90034
	480 VAC	35 mA	100NO-480A	6300	RLY90035
2 Poles Normally Open	24 VDC	738 mA	2100NO-24D-18	33	RLY90036
	24 VAC	1292 mA	2100NO-24A-18	8	RLY90037
	120 VAC	274 mA	2100NO-120A-18	190	RLY90023
	220 VAC	146 mA	2100NO-220A-18	700	RLY90038
	277 VAC	110 mA	2100NO-277A-18	1200	RLY90039
	480 VAC	70 mA	2100NO-480A-18	3150	RLY90040
3 Poles Normally Open	24 VDC	1107 mA	3100NO-24D-18	22	RLY90041
	24 VAC	1938 mA	3100NO-24A-18	5.3	RLY90042
	120 VAC	411 mA	3100NO-120A-18	127	RLY90019
	220 VAC	219 mA	3100NO-220A-18	467	RLY90013
	277 VAC	165 mA	3100NO-277A-18	800	RLY90043
	480 VAC	105 mA	3100NO-480A-18	2100	RLY90044

Ordering Information

Choose the **Part Number** of the relay from the table above that matches the needs for your application. We also offer other styles of Mercury Relays—consult Tempco with your requirements.

Standard lead time is stock to 5 days.

⚠ WARNING: Cancer and Reproductive Harm - www.P65Warnings.ca.gov.