

3 & 4 CONDUCTORS

3 Conductors, Combination 4 Amp & 30 Amp

Model 331

Part No.	Conductors	Description	VOLTAGE AC/DC	AMP RATING AT 240 VAC	MAX FREQ. MHz	CONTACT RESISTANCE	MAX OP. RPM	TEMPERATURE Max.F(C) / Min.F(C)	ROTATION Torque (gm-cm)	CIRCUIT SEPARATION
MER00331	3	Standard Model	0-250	2@4/1@30	100	<1mΩ	1800	140(60)/-20(-29)	200	>25MΩ
MER00333	3	Stainless Steel Bearing	0-250	2@4/1@30	100	<1mΩ	1800	140(60)/-20(-29)	200	>25MΩ

ACCESSORIES



MER90010
Terminal
16-14 AWG



MER90009 Terminal
16-14 AWG

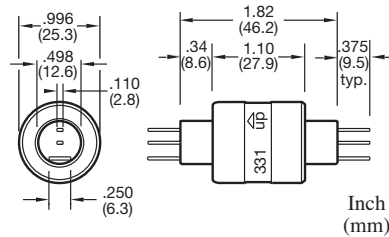


MER90101
Boot Kit
For dust and splash protection
IP51



MER90008 Terminal
22-18 AWG

Terminals for other wire gauges available.



Includes (1) MER90010,
(1) MER90009 and (4) MER90008



3 Conductors, 30 Amp

Model 330

Part No.	Conductors	Description	VOLTAGE AC/DC	AMP RATING AT 240 VAC	MAX FREQ. MHz	CONTACT RESISTANCE	MAX OP. RPM	TEMPERATURE Max.F(C) / Min.F(C)	ROTATION Torque (gm-cm)	CIRCUIT SEPARATION
MER00330	3	Standard Model	0-250	30	100	<1mΩ	1200	140(60)/-20(-29)	300	>25MΩ
MER00332	3	Stainless Steel Bearing	0-250	30	100	<1mΩ	1200	140(60)/-20(-29)	300	>25MΩ

ACCESSORIES



MER90010
Terminal
16-14 AWG



MER90021
Shrink Tube

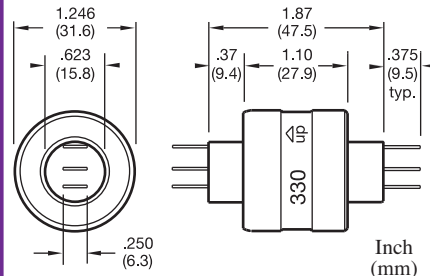


MER90102
Boot Kit
For dust and splash protection
IP51



MER90019
Terminal 16-14 AWG

Terminals for other wire gauges available.



Includes (3) MER90010,
(3) MER90019 and (3) MER90021



4 Conductors, Combination 4 Amp & 30 Amp

Model 430

Part No.	Conductors	Description	VOLTAGE AC/DC	AMP RATING AT 240 VAC	MAX FREQ. MHz	CONTACT RESISTANCE	MAX OP. RPM	TEMPERATURE Max.F(C) / Min.F(C)	ROTATION Torque (gm-cm)	CIRCUIT SEPARATION
MER00430	4	Standard Model	0-250	2@4/2@30	100	<1mΩ	1200	140(60)/-20(-29)	400	>25MΩ
MER00431	4	Stainless Steel Bearing	0-250	2@4/2@30	100	<1mΩ	1200	140(60)/-20(-29)	400	>25MΩ

ACCESSORIES



MER90022 Plug Assembly
12-in. wires, 14 AWG & 18 AWG
SUITABLE FOR UP TO 20 AMPS



MER90010
16-14 AWG



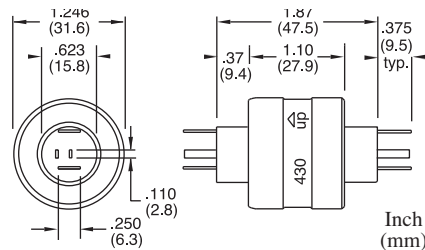
MER90009, 16-14 AWG



MER90102
Boot Kit
For dust and splash protection
IP51



MER90008, 22-18 AWG



Includes (2) MER90009,
(2) MER90010 and (4) MER90008

