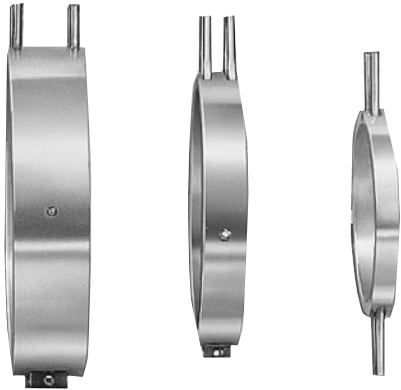


### Maxiband “MXC” Cool Only *with* Built-In Cooling Tubes



**Maxiband MXC Bands** are made for cooling only and are available in five standard widths: 3/4", 1-1/2", 2-1/2", 3", and 4". For 3/4" and 1-1/2" wide MXC bands the ends of the stainless steel cooling tubes exit 180° apart. Complete Maxiband specifications can be found on page 1-81.

**Minimum Inside Diameter:** 5".

Consult Tempco if smaller ID is required.

For **optional cooling tube fittings**, see page 3-52 in the Cast-In Band Heater Section.

#### Cooling Tube Specifications

Band Width	3/4"	1-1/2"	2-1/2"	3"	4"
Cooling Tube Diameter	3/8"	3/8"	3/8"	3/8"	3/8"
Cooling Tube Extension	4"	4"	4"	4"	4"
Cooling Tube Material	Stainless Steel				



#### Optional Reverse Construction

Reverse MXC Maxibands lend themselves to cooling cylindrical surfaces from the inside out.

The specially designed internal brackets exert pressure to both heater halves to assure good contact against the inside diameter of the part being cooled. Reverse MXC Maxiband minimum OD is 8". Consult Tempco if smaller OD is required.

Made strictly to customer specifications.

Consult Tempco with your requirements.

### Standard (Non-Stock) MXC (Cool Only) Maxibands — with 3/8" Diameter Cooling Tube

#### 0.75 in (19.1 mm) Width

Width		ID		Part Number
in	mm	in	mm	
3/4	19.1	6	152.4	MXC00001
3/4	19.1	6½	165.1	MXC00002
3/4	19.1	7	177.8	MXC00003
3/4	19.1	7½	190.5	MXC00004
3/4	19.1	8	203.2	MXC00005
3/4	19.1	8½	215.9	MXC00006
3/4	19.1	9	228.6	MXC00007
3/4	19.1	9½	241.3	MXC00008
3/4	19.1	10	254.0	MXC00009
3/4	19.1	10½	266.7	MXC00010
3/4	19.1	11	279.4	MXC00011

#### 1.5 in (38.1 mm) Width

Width		ID		Part Number
in	mm	in	mm	
1½	38.1	6	152.4	MXC00012
1½	38.1	6½	165.1	MXC00013
1½	38.1	7	177.8	MXC00014
1½	38.1	7½	190.5	MXC00015
1½	38.1	8	203.2	MXC00016
1½	38.1	8½	215.9	MXC00017
1½	38.1	9	228.6	MXC00018
1½	38.1	9½	241.3	MXC00019
1½	38.1	10	254.0	MXC00020
1½	38.1	10½	266.7	MXC00021
1½	38.1	11	279.4	MXC00022

#### Ordering Information

See page 1-94

**CONTINUED** →